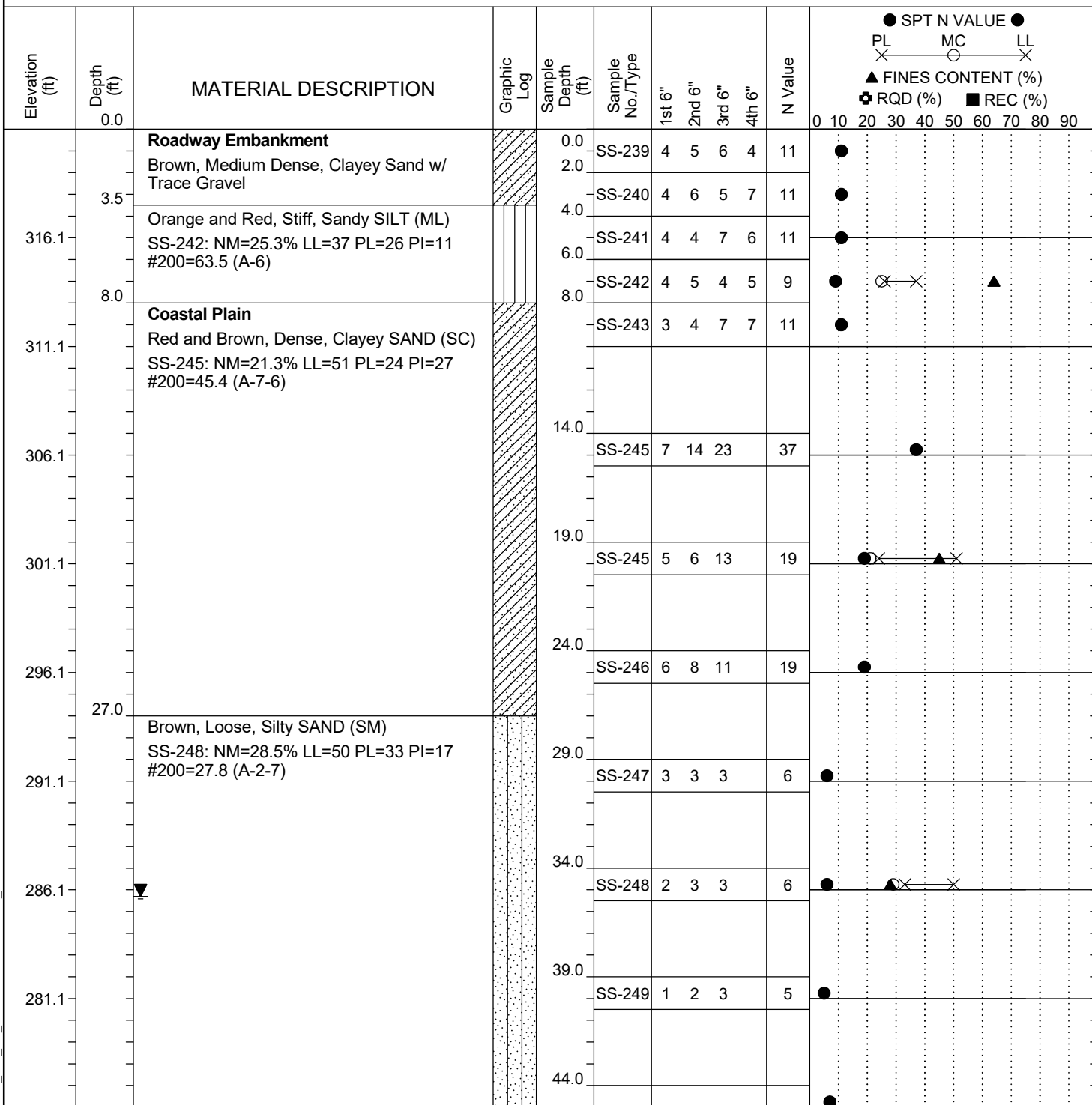


Project ID:	P039719	County:	Richland	Boring No.:	G-121
Site Description:	Carolina Crossroads Phase 2			Route:	Broad River Rd.
Eng./Geo.:	M. Stanbury	Boring Location:	612+67	Offset:	40 LT
Elev.:	321.1 ft	Latitude:	34.03985446	Longitude:	-81.09401208
Date Started:	3/2/2022				
Total Depth:	69.8 ft	Soil Depth:	69.8 ft	Core Depth:	N/A ft
Date Completed:	3/2/2022				
Bore Hole Diameter (in):	2.25	Sampler Configuration	Liner Required: Y (N)		Liner Used: Y (N)
Drill Machine:	D-50 #439	Drill Method:	RW	Hammer Type:	Automatic
Energy Ratio:	90.8%				
Core Size:	N/A	Driller:	R. Cassell	Groundwater:	TOB N/A
24HR	35.3 ft				



LEGEND

Continued Next Page

SAMPLER TYPE		DRILLING METHOD	
SS - Split Spoon	NQ - Rock Core, 1-7/8"	HSA - Hollow Stem Auger	RW - Rotary Wash
UD - Undisturbed Sample	CU - Cuttings	CFA - Continuous Flight Augers	RC - Rock Core
AWG - Rock Core, 1-1/8"	CT - Continuous Tube	DC - Driving Casing	